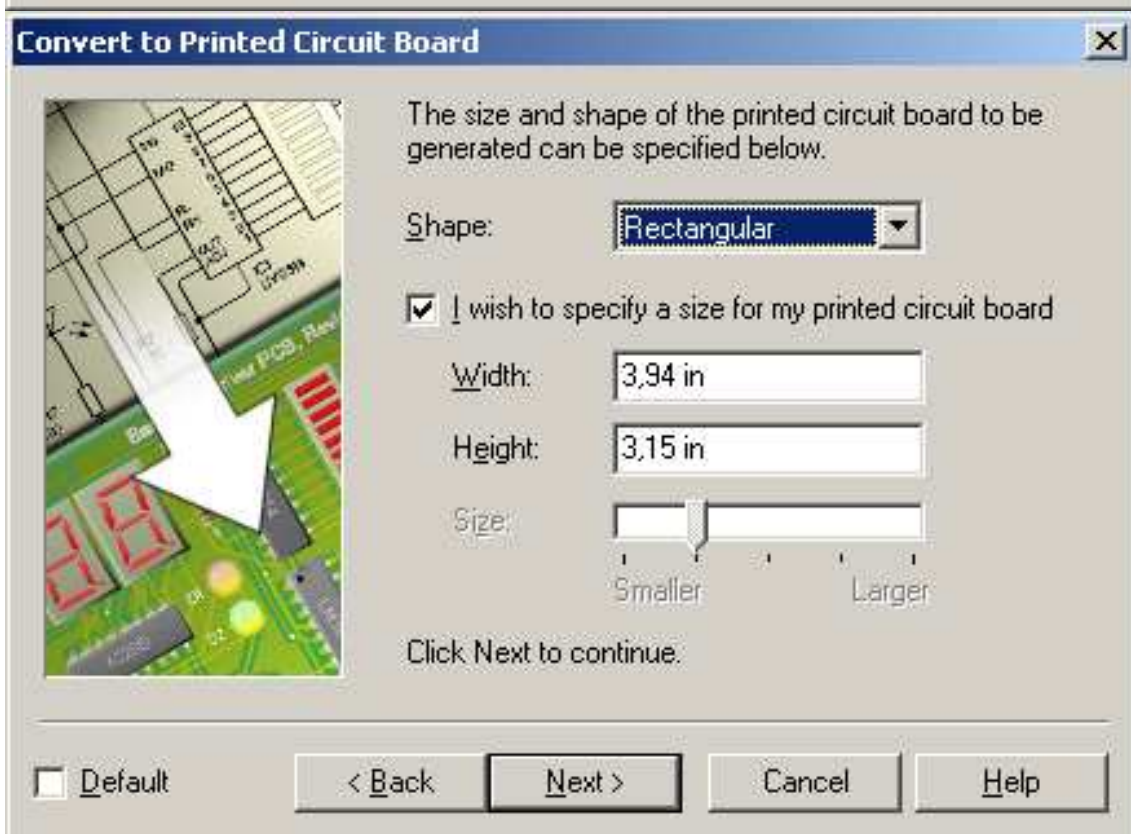
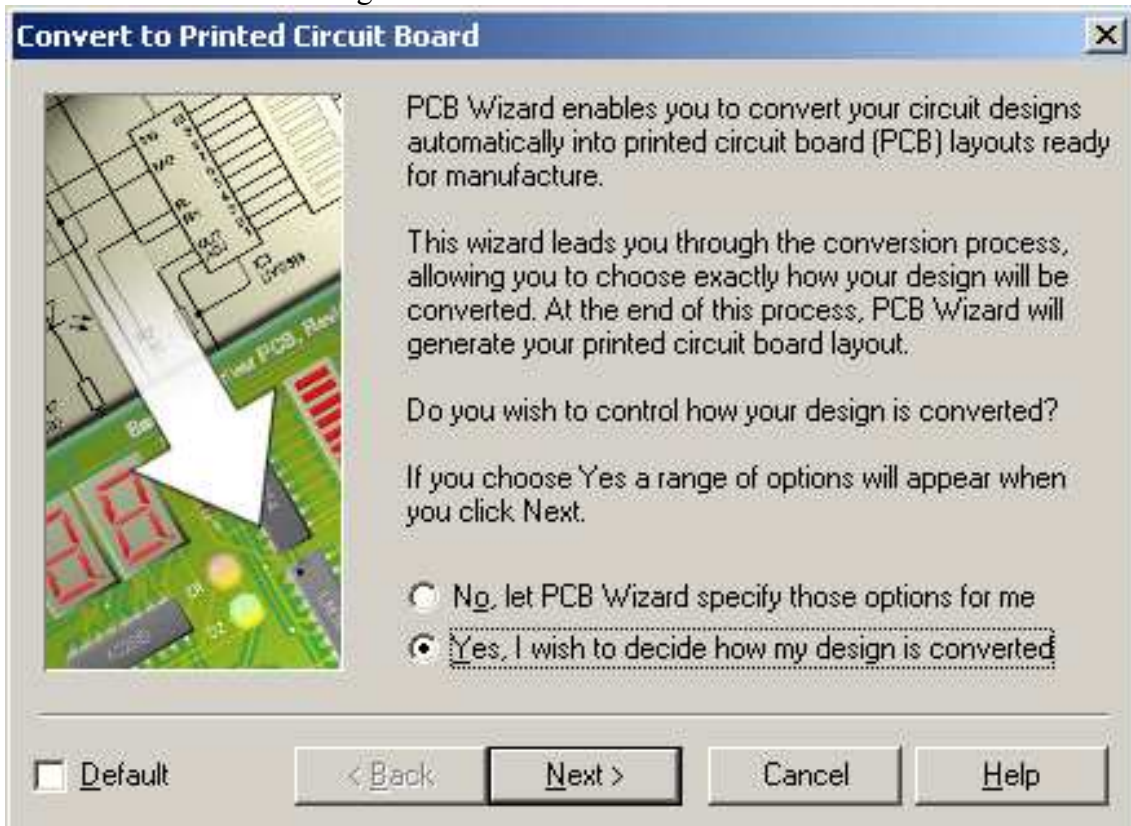
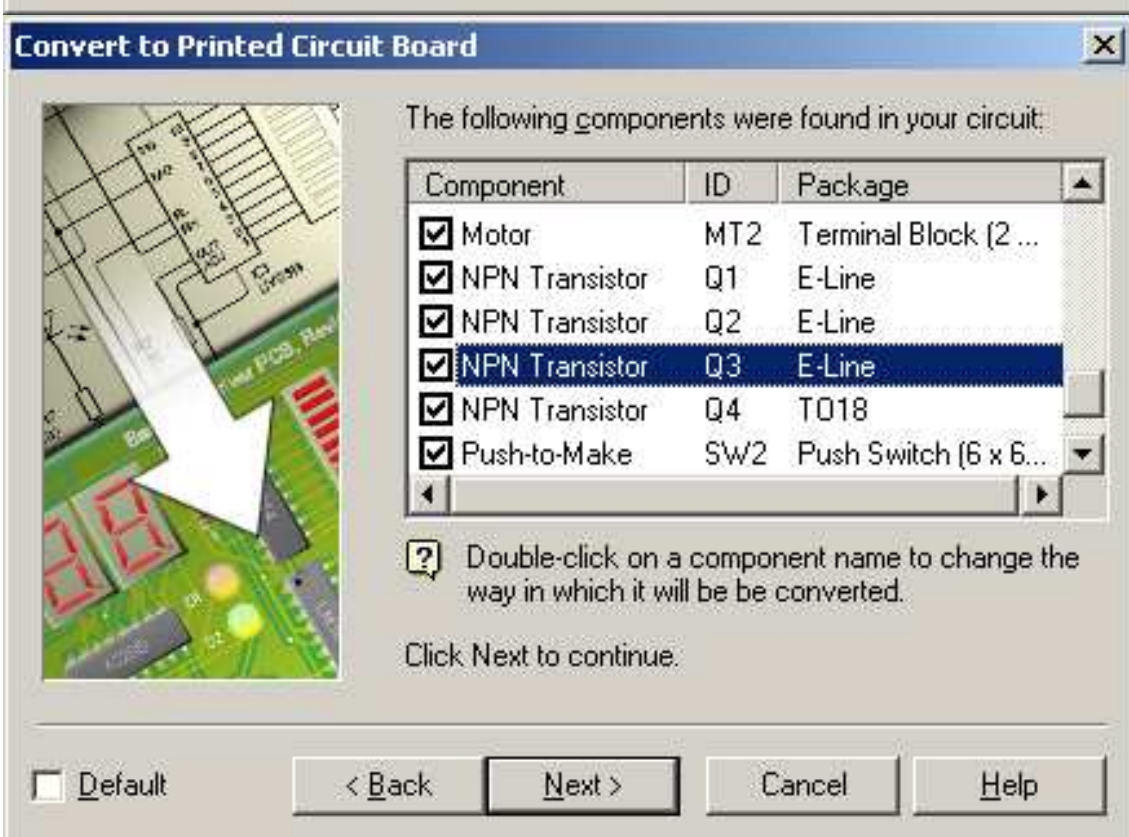
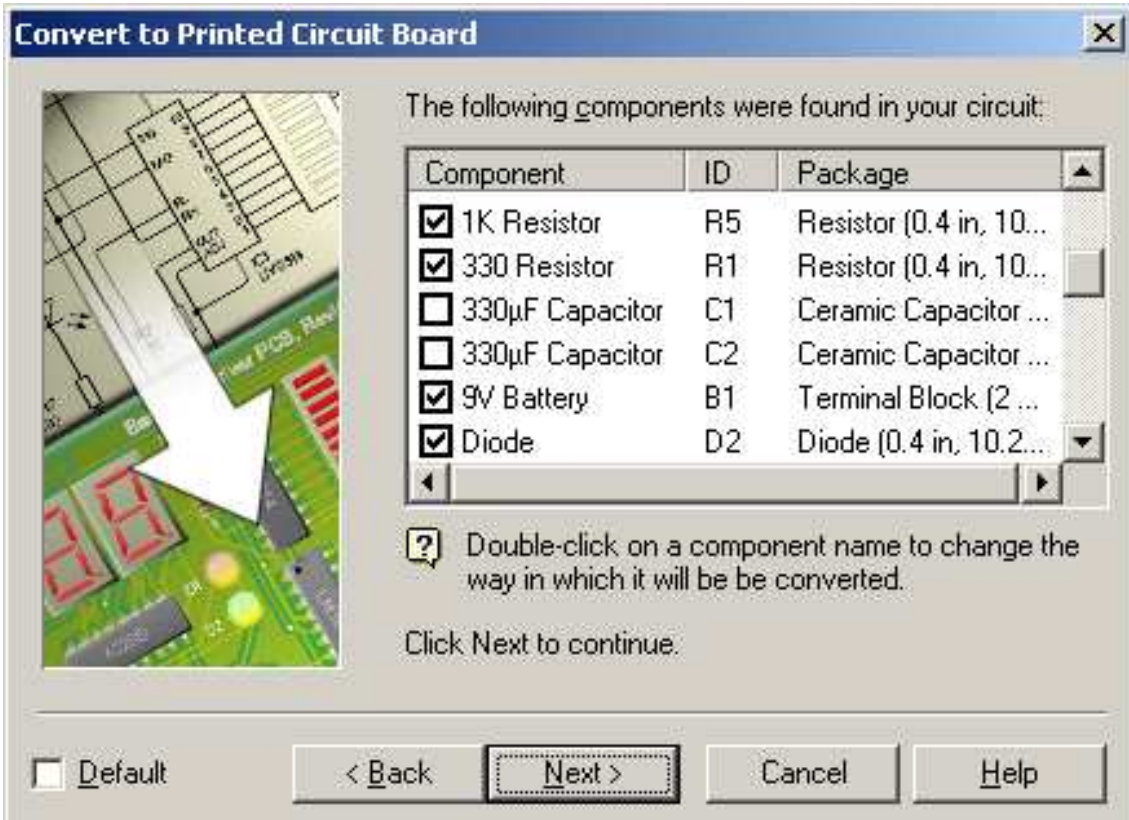


DISEÑO DEL CIRCUITO IMPRESO

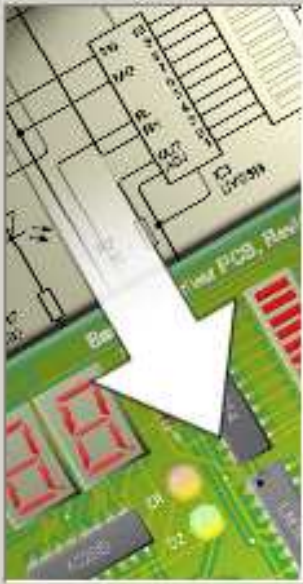
1. Abrir el circuito en pcbwizard:
File > open > tipo de archivos "All files" > circuito.lvw
2. Convertir a circuito impreso:
Tools > Convert > Design to Printer Circuit Board



- Eliminar los condensadores de 100 nF de los motores, sustituir transistores y finales de carrera.



Convert to Printed Circuit Board




The following components were found in your circuit:

Component	ID	Package
<input checked="" type="checkbox"/> NPN Transistor	Q2	E-Line
<input checked="" type="checkbox"/> NPN Transistor	Q3	E-Line
<input checked="" type="checkbox"/> NPN Transistor	Q4	T018
<input checked="" type="checkbox"/> Push-to-Make	SW2	Terminal Block (2 ...
<input checked="" type="checkbox"/> Push-to-Make	SW3	Terminal Block (2 ...
<input checked="" type="checkbox"/> 555T 555	SW4	Terminal Block (2 ...

Convert As

Package:

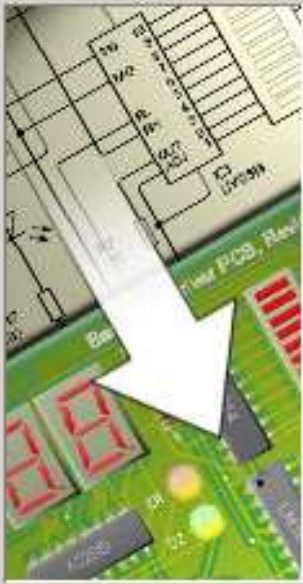
Terminal Block (2 pin; 0.2 in, 5 mm)

 The package specified above will be used when this component is converted into a PCB.

OK Cancel Help

Default < Back

Convert to Printed Circuit Board




My circuit contains a hidden digital power supply.

For the circuit to work correctly, these hidden connections need to be joined to a real power supply.

Connect the hidden power supply as follows:

Power: B1 on Pin 1: Positive

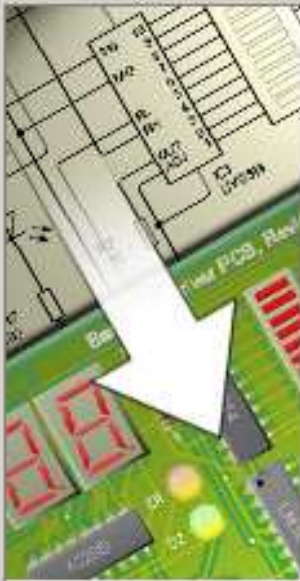
Ground: B1 on Pin 2: Negative

 To include an explicit digital supply on your circuit, add terminals connected to nets named VCC and GND (for TTL) or VDD and VSS (for CMOS)

Click Next to continue.

Default < Back **Next >** Cancel Help

Convert to Printed Circuit Board



The components can be automatically placed on the printed circuit board.

- A**utomatically place components on the board
 - A**nimate component placement
 - A**llow components to be rotated
 - A**utomatically fit placement to board
 - T**ake into account symbol positions

You can specify the minimum spacing allowed between components in the field below.

Minimum spacing:

Click Next to continue.

Default

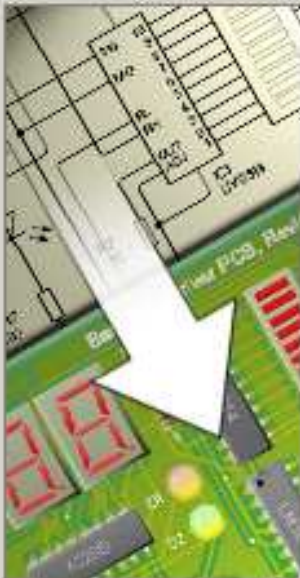
< **B**ack

Next >

Cancel

Help

Convert to Printed Circuit Board



The circuit connections can be routed automatically.

It is during the automatic routing process that PCB Wizard will work out a suitable path for each connection and then convert these into copper tracks and wires.

- A**utomatically route connections in your circuit
 - A**llow tracks to be placed diagonally
 - A**llow wire links to be added when necessary
 - A**llow routing on both sides of the board

Grid:

Click Next to continue.

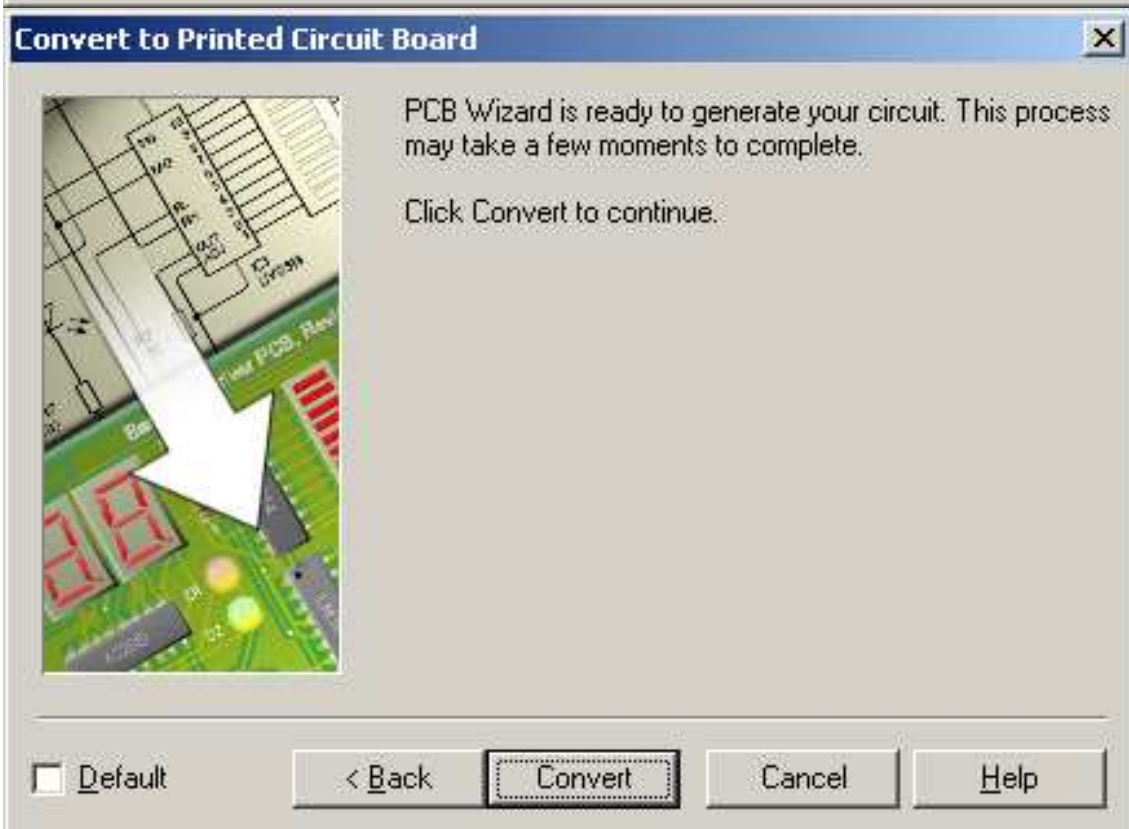
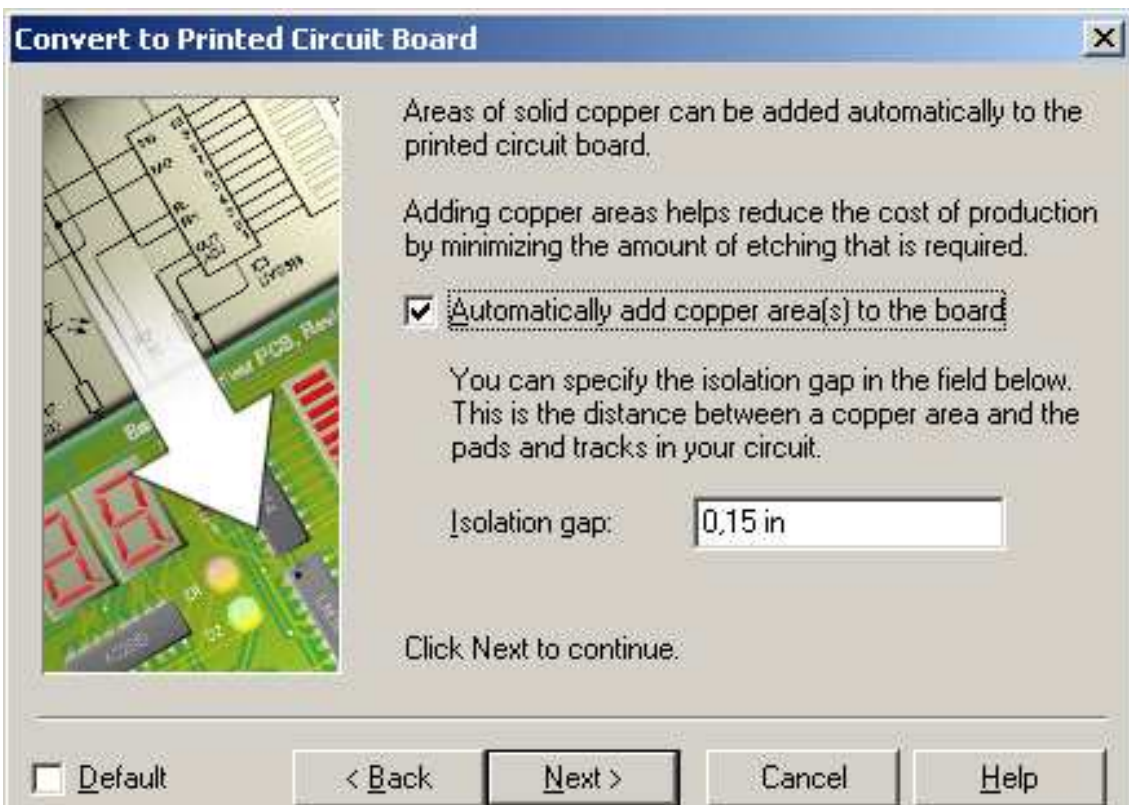
Default

< **B**ack

Next >

Cancel

Help



Realizar los siguientes ajustes:

- Posicionar las clemas en la periferia del circuito impreso.
- Hacer un tercer agujero al interruptor.
- Mover las patillas de los potenciómetros.
- Imprimir: seleccionar la vistas normal, real World y Artwork.
- Archivo > Print mirror > Print.